

SPECIFICATIONS:
(See Note 1)

Analog I/Os:

- 0 - 5 V DC output, 8 - 30 V DC input, 20 mA nominal
- 0.5 - 4.5 V DC output, 8 - 30 V DC input, 20 mA nominal
- 0 - 10 V DC output, 12 - 30 V DC input, 20 mA nominal
- 0 - 3 V DC output, 5 V DC input, 20 mA nominal

Measuring Range: See range table below

Linearity Error: $\pm 0.15\%$ of FSO (Full Span Output) typical, $\pm 0.25\%$ max

Resolution: 0.025% of FSO

Update Rate: 300 Hz nominal

Operating Temperature Range: -20° to 105° C

Temperature Coefficient $\leq +0.015\%$ of FSO/K

Humidity: 95% RH non-condensing

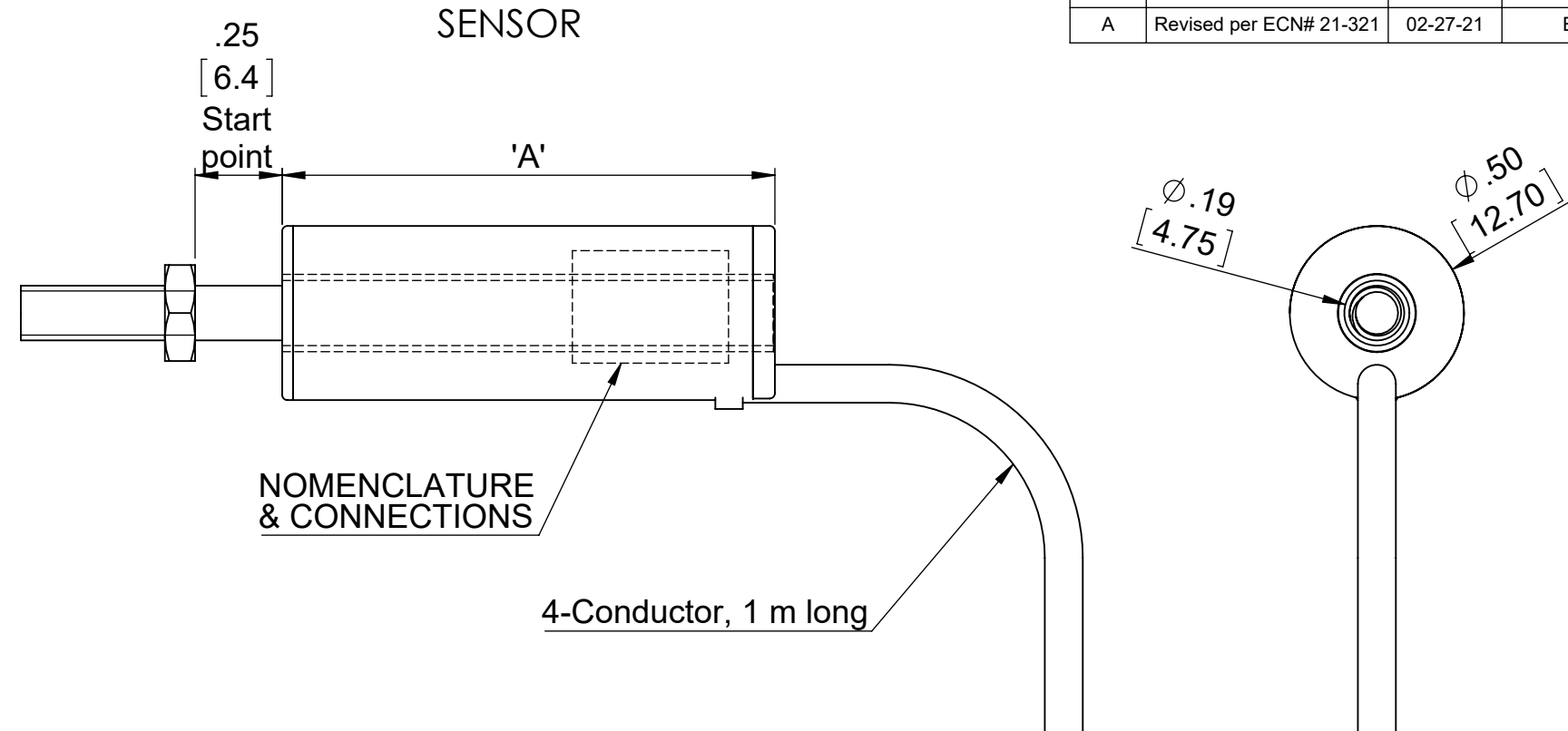
Vibration: 5 - 20 Hz, 0.5 inch p-p; 20 - 2000 Hz, 4.2 g p-p

Shock: 1000 g, 11 msec.

Sealing: IEC IP-67

Note 1: Analog output is maximum with rod extended;
Specifications are subject to change without notice.

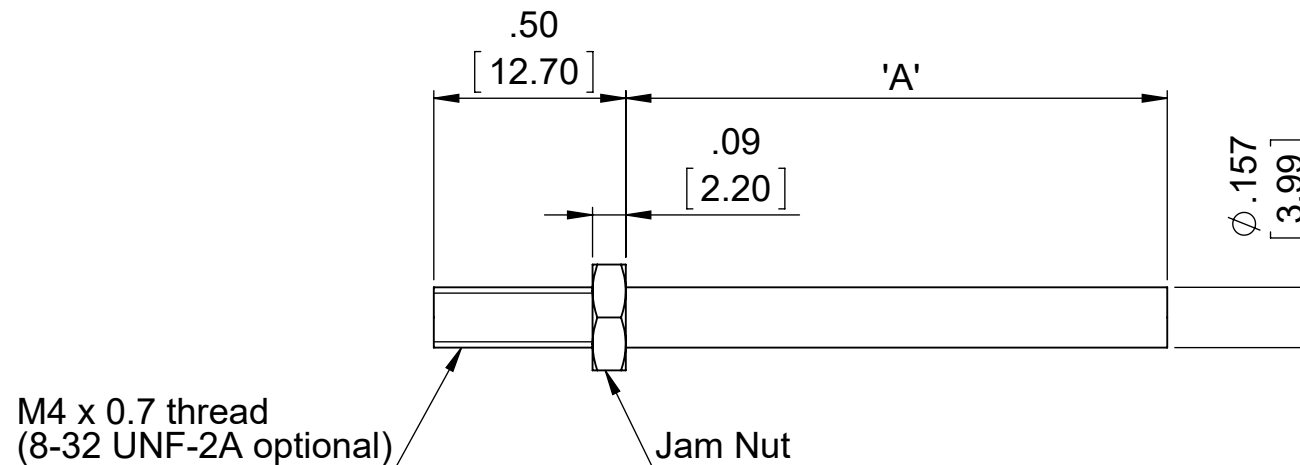
REVISIONS			
REV.	DESCRIPTION	DATE	APPROVED
--	INITIAL RELEASE	01-27-21	JPW
A	Revised per ECN# 21-321	02-27-21	EH



NOMENCLATURE & CONNECTIONS

4-Conductor, 1 m long

TARGET ROD



M4 x 0.7 thread
(8-32 UNF-2A optional)

Jam Nut

LZE-13 Range Table

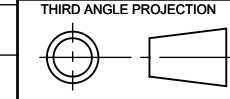
Nominal Range		Length 'A'	Suffix
Inches	mm	Inches	-XX
0.10	2.5	1.50	.10
0.25	6.4	1.50	.25
0.50	12.7	1.50	.50
0.75	19.0	1.50	.75
1.00	25.0	1.50	01
2.00	50.0	2.50	02
3.00	75.0	3.50	03
4.00	100.0	4.50	04
6.00	150.0	6.59	06
8.00	200.0	8.59	08

LZ-13 Connections Table

I/O Function	Color
+Power Input	Red
Ground	Black
Analog Output	Green
SenSet™	White

UNLESS OTHERWISE SPECIFIED:
1. DO NOT SCALE DRAWING
2. DIMENSIONS ARE IN INCHES
3. INTERPRET DIM/TOL PER ANSI Y14.5M-1994
4. DEBURR/BREAK SHARP EDGES
5. DIMS ARE BEFORE FINISH
6. (DATA) FOR REFERENCE ONLY

TOLERANCES
DECIMAL: .XX ±.010 .XXX ±.005
ANGULAR: ±.5°



CONTRACT NO. --	
DRAWN BY: JPW	DATE: 01-06-21
ENGINEER: JPW	01-06-21
CHECKED BY: JPW	01-06-21
QA: --	--
MFG: --	--
APPROVED BY: --	--

ALLIANCE SENSORS GROUP
A DIVISION OF H.G. SCHAEVITZ LLC
Moorestown, New Jersey USA alliancesensors.com

LZE-13-A Series LVIT OUTLINE			
SIZE: B	CAGE CODE: 7LE43	DWG. NO.: 3020-0017-XX	REV: A
FILENAME: 3020-0017-XX	SCALE: N/A	RELEASE DATE: --	SHEET 1 OF 1