

**SPECIFICATIONS:**

**Analog I/Os: (See Note 1)**

- 0 - 3 V DC output, 5 V DC input, 40 mA max.
- 0 - 5 V DC output, 8 - 30 V DC input, 40 mA max.
- 0.5 - 4.5 V DC output, 8 - 30 V DC input, 40 mA max.
- 0 - 10 V DC output, 12 - 30 V DC input, 40 mA max.
- 4 - 20 mA DC output, 18 - 30 V DC input, 60 mA max. (75 C max.)

Measuring Ranges: See Range Table

Zero and Full Scale: SenSet Adjustable

Linearity Error:  $\pm 0.15\%$  FSO (Full Span Output) typical,  $\pm 0.25\%$  of FSO max.

Resolution: 0.025% of FSO

Update Rate: 300 Hz nominal

Operating Temperature Range: -20 to 85 C (-40 to 105 C extended temp.)

Temperature Coefficient:  $\leq \pm 0.015\%$  of FSO/K

Humidity: 95% RH non-condensing

Vibration: 5 - 20 Hz, 0.5 inch p-p; 20 - 2000 Hz, 4.2 g p-p

Shock: 1000 g, 11 msec.

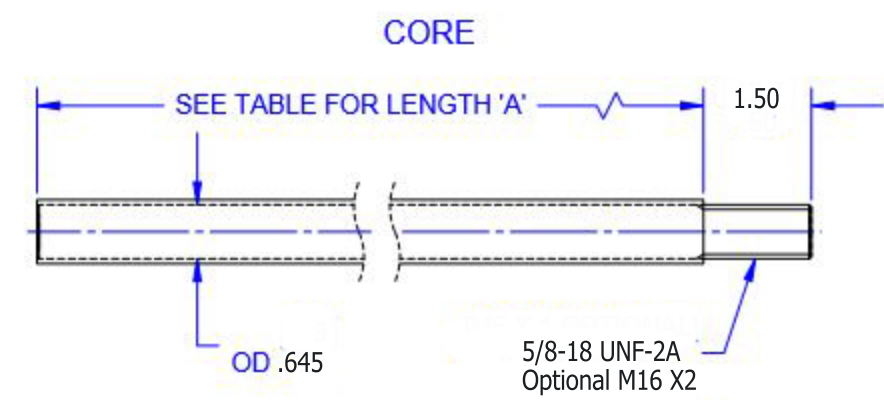
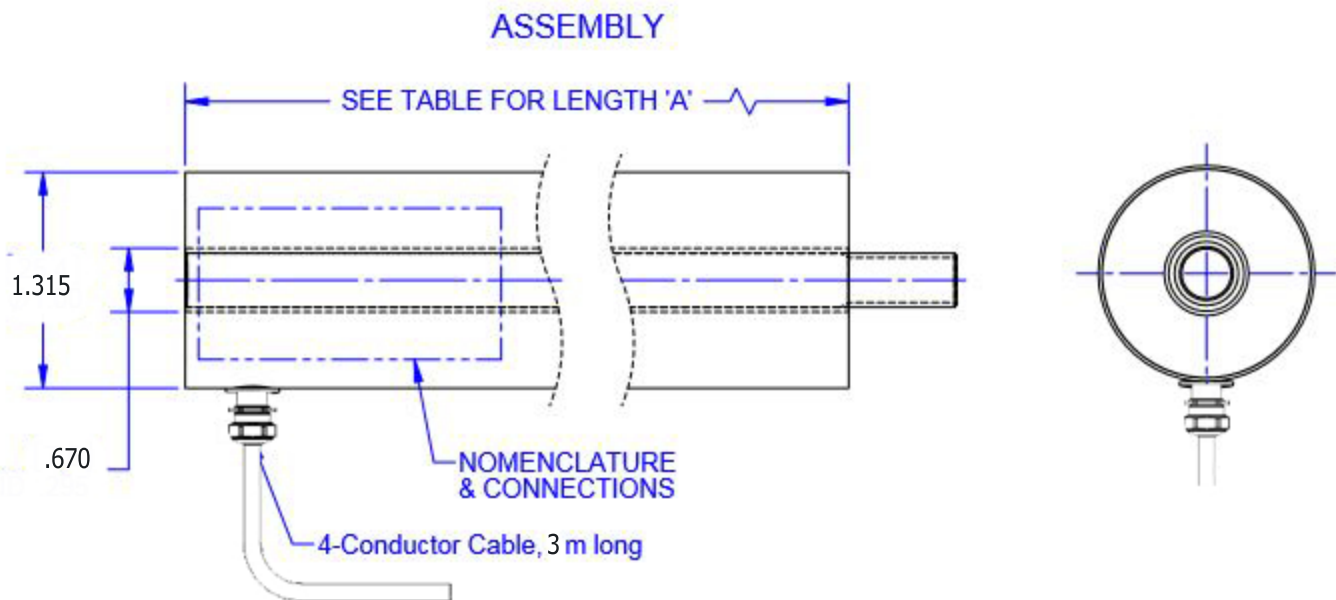
**Note 1:**

Standard output is at maximum with core extended; consult LZ-33 data sheet to specify reversed output.

**PRELIMINARY**

NOT FOR MANUFACTURE REFERENCE ONLY

REVISIONS			
REV.	DESCRIPTION	DATE	APPROVED



Nominal Range		Length "A"
Inches	mm	Inches (mm)
6.0	150	9.00 (228.6)
9.0	225	12.00 (304.8)
12.0	300	15.00 (381.0)
15.0	375	18.00 (457.2)
18.0	450	21.00 (533.4)
24.0	600	27.00 (685.8)
30.0	750	33.00 (838.2)
36.0	900	39.00 (990.6)

I/O Function	Cable Color
+ Power Input	Red
Ground	Black
Analog output	Green
SenSet™	White

UNLESS OTHERWISE SPECIFIED:		CONTRACT NO.	
1. DO NOT SCALE DRAWING		-	
2. DIMENSIONS ARE IN INCHES		DESIGNED BY:	DATE:
3. INTERPRET DIMTOL PER ASME Y14.5M-1994		S.P.	05-16-2015
4. DEBUR/REMOVE SHARP EDGES		ENGINEER:	
5. DRG USE BEFORE FINISH		Ed Herceg	08-06-2015
6. (DATA) FOR REFERENCE ONLY		CHECKED BY:	
		Ed Herceg	
TOLERANCES:		DATE:	
DECIMAL:	ANGULAR:		
.XX ± .015	± .2°		
.XXX ± .005			
THIRD ANGLE PROJECTION		SCALE:	
APPROVED BY:		SCALE:	
		N/A	

**ALLIANCE SENSORS GROUP**  
 A DIVISION OF H.G. SCHAEVITZ LLC  
 Moorestown, New Jersey USA [alliancesensors.com](http://alliancesensors.com)

**LZ-33-XX-R**  
 OUTLINE

**3020-0004-XX**

SCALE: N/A  
 SHEET 1 OF 1